



Endpoint Security Console – Version 2.0

Installation and Configuration Guide

Installation

Endpoint Security Console should be installed on a network server that is managed by a System Administrator. The Endpoint Security service, which will run silently, can either be installed on the networked workstations manually, or through group policy within Active Directory. To begin installation, double-click the Endpoint Security Console executable. Carefully read and agree to the product End-User License Agreement to proceed. Endpoint Security Console will install seamlessly with no prompts. For more detailed information, visit our website at <http://www.privacyware.com>.

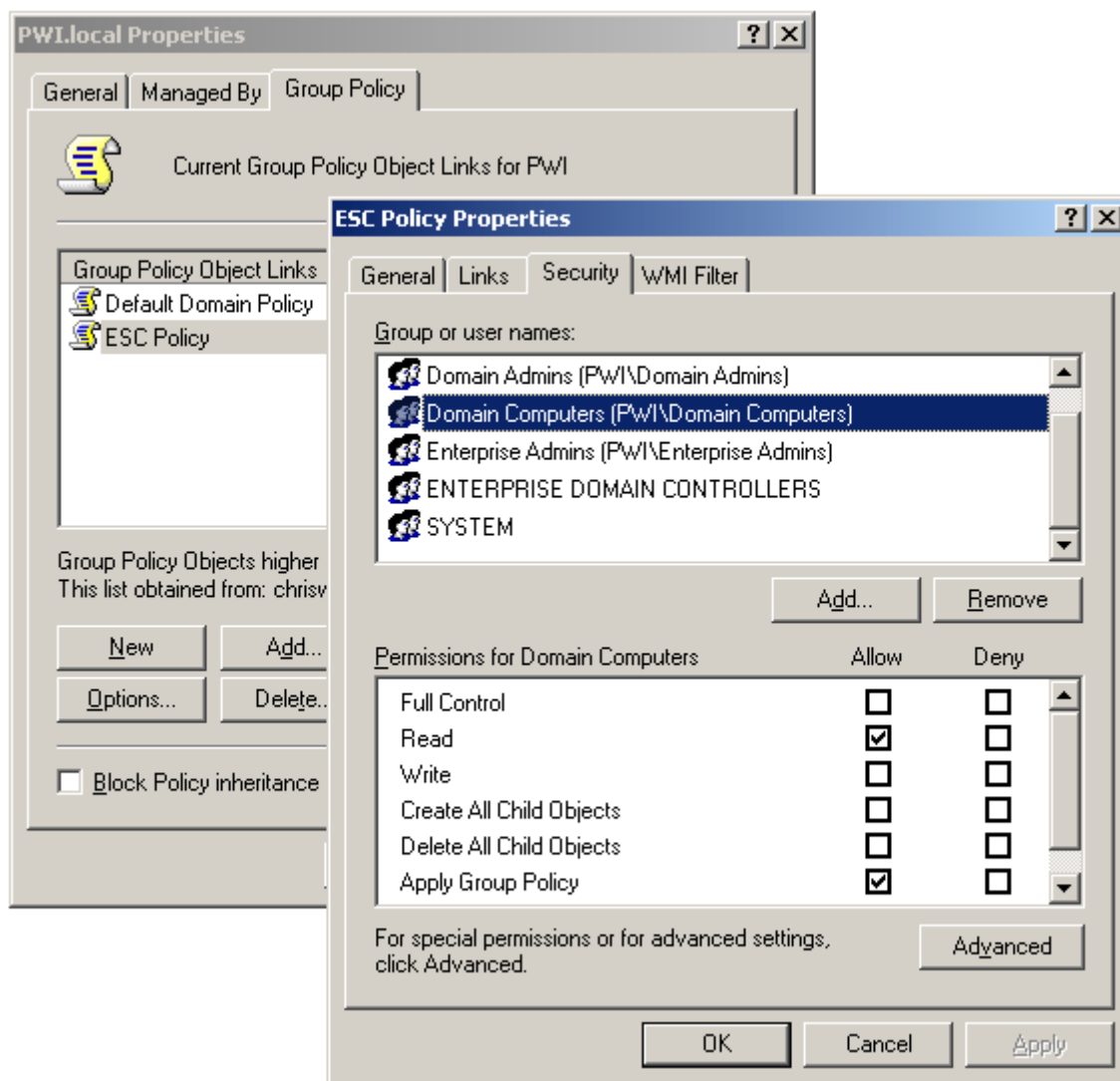


Configuring Endpoint Security Console as a Networked Service

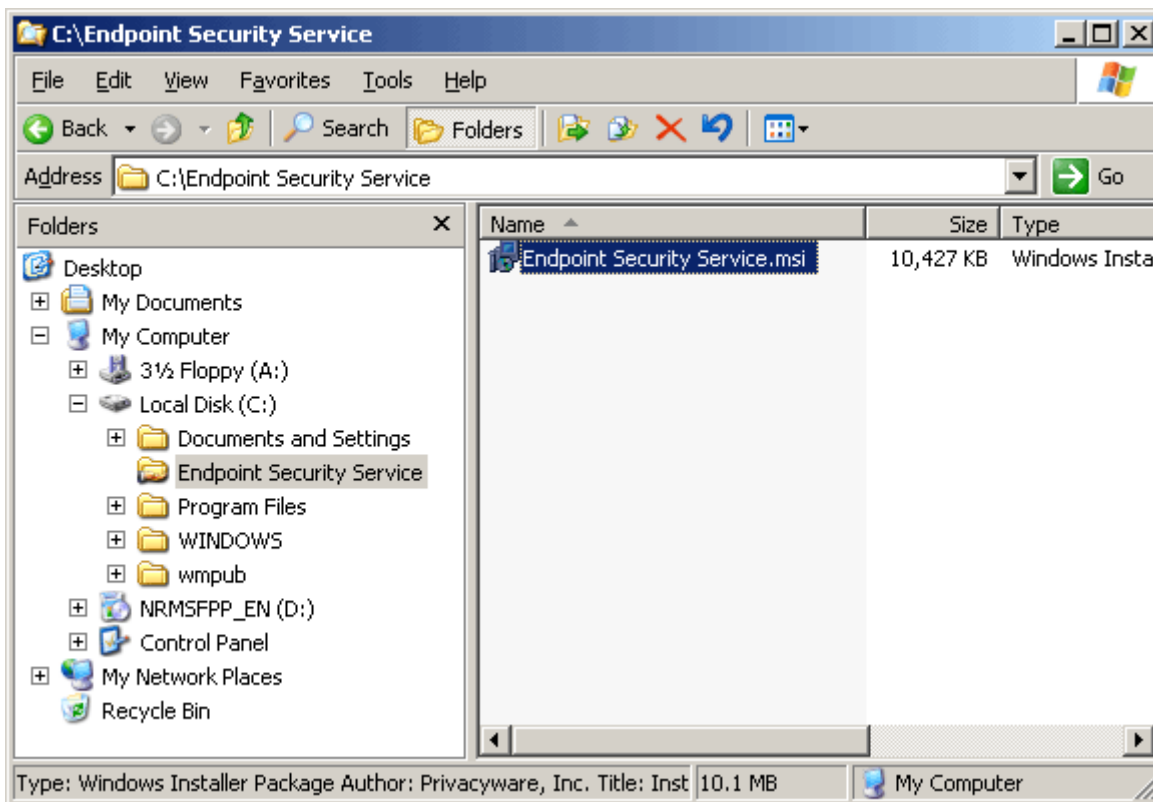
Before Endpoint Security Console can add any Computer/Group/User, the Console must be installed as a Networked Service on that computer. This can be done either manually, by launching the network service executable on each computer, or it can be installed as a Group Policy Software Installation. In order for Group Policy Installation to function, the server must be configured as a Domain Controller and all workstations must be part of that domain.

To configure a Group Policy Installation, the following steps must be taken:

- 1) Either the default Group Policy must be modified or a new Group Policy must be created (suggested). Once the new Group Policy is created, click Properties, select the Security tab, delete 'Authenticated Users' from groups list, add 'Domain Computers' to the groups list and make sure that they are the only group that has 'Apply Group Policy' Permission.

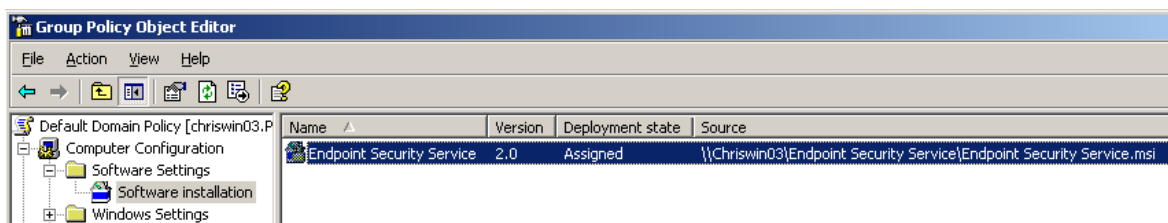


- 2) Once the Group Policy has been configured, an Installation Package must be created ([click here for more information](#)). In order to set up the package correctly, a shared folder must be specified that contains the Endpoint Security Service executable. This folder must allow access from all Active Directory Users.



- 3) Once this is in place, the installation package can be set up by selecting New/Package from the Group Policy Object Editor.

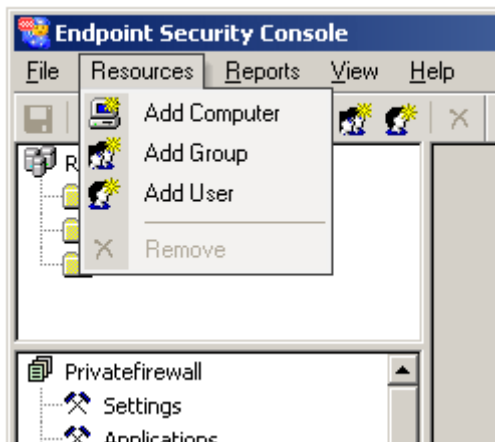
When prompted, navigate to the shared folder (through the mapped network path) where the Privatefirewall Networked Service executable is located and click on the 'Open' button. When completed, the executable should be listed as 'Assigned'.



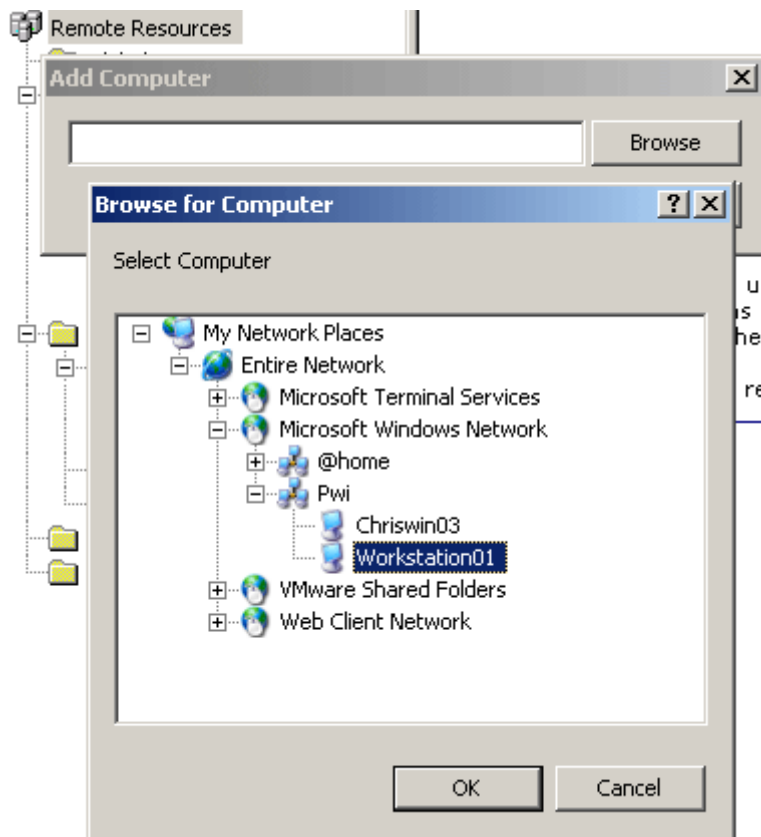
The next time any workstation that is part of the domain logs in, the Privatefirewall Network Service will be automatically installed.

Adding Computers, Groups, and Users

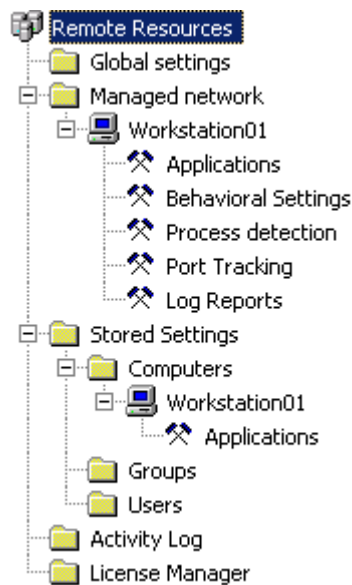
In order to manage any other computers with the Endpoint Security Service, the computer must be added to Endpoint Security Console. Workstations can be added individually, or based on Users or Groups within Active Directory. This can be initiated by selecting 'Resources/Add' From the Main Menu:



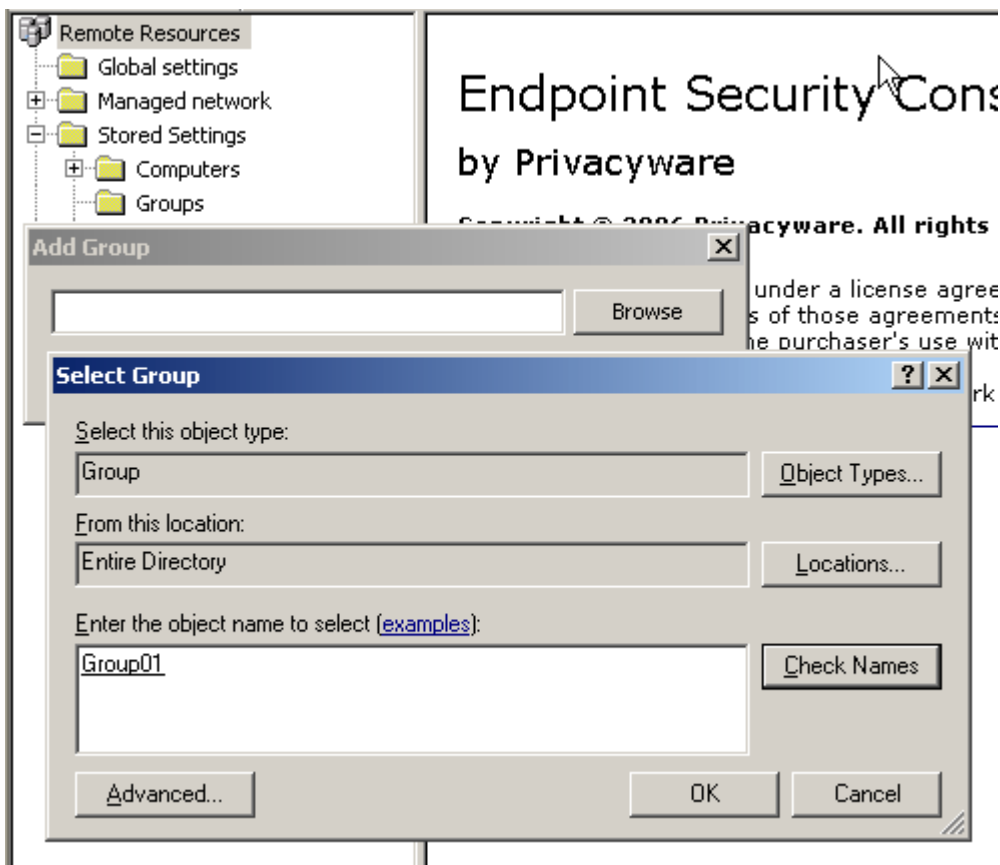
Individual workstations can be added by selecting the desired network computer:



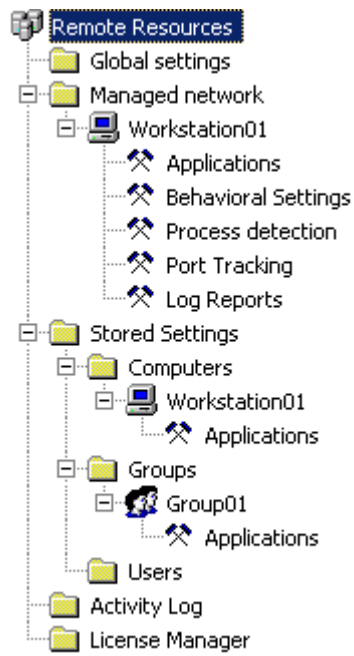
The name of the workstation will appear within the tree menu after it is successfully added:



Using the same process, Groups or Users can also be added from an existing Active Directory structure:



The name of the group or user will appear within the tree menu after it is successfully added:



Endpoint Security Console

Installation and Configuration Guide

Document Version

Endpoint Security Console, Privacyware.

There is no warranty of any kind with respect to the completeness or accuracy of this manual. Privacyware may make improvements and/or changes to the product(s) and/or programs described in this User Guide at any time and without notice.

Copyright & Trademarks

Copyright © 2006 Privacyware. All rights reserved.

Information in this document is subject to change without notice. The software described in this document is furnished under a license agreement or non-disclosure agreement. The software may be used or copied only in accordance with the terms of those agreements. No part of this publication may be reproduced, stored in a retrieval system, or transmitted in any form or any means electronic or mechanical, including photocopying and recording for any purpose other than the purchaser's use without the written permission of Privacyware.

All other trademarks and registered trademarks are the property of their respective holders.
